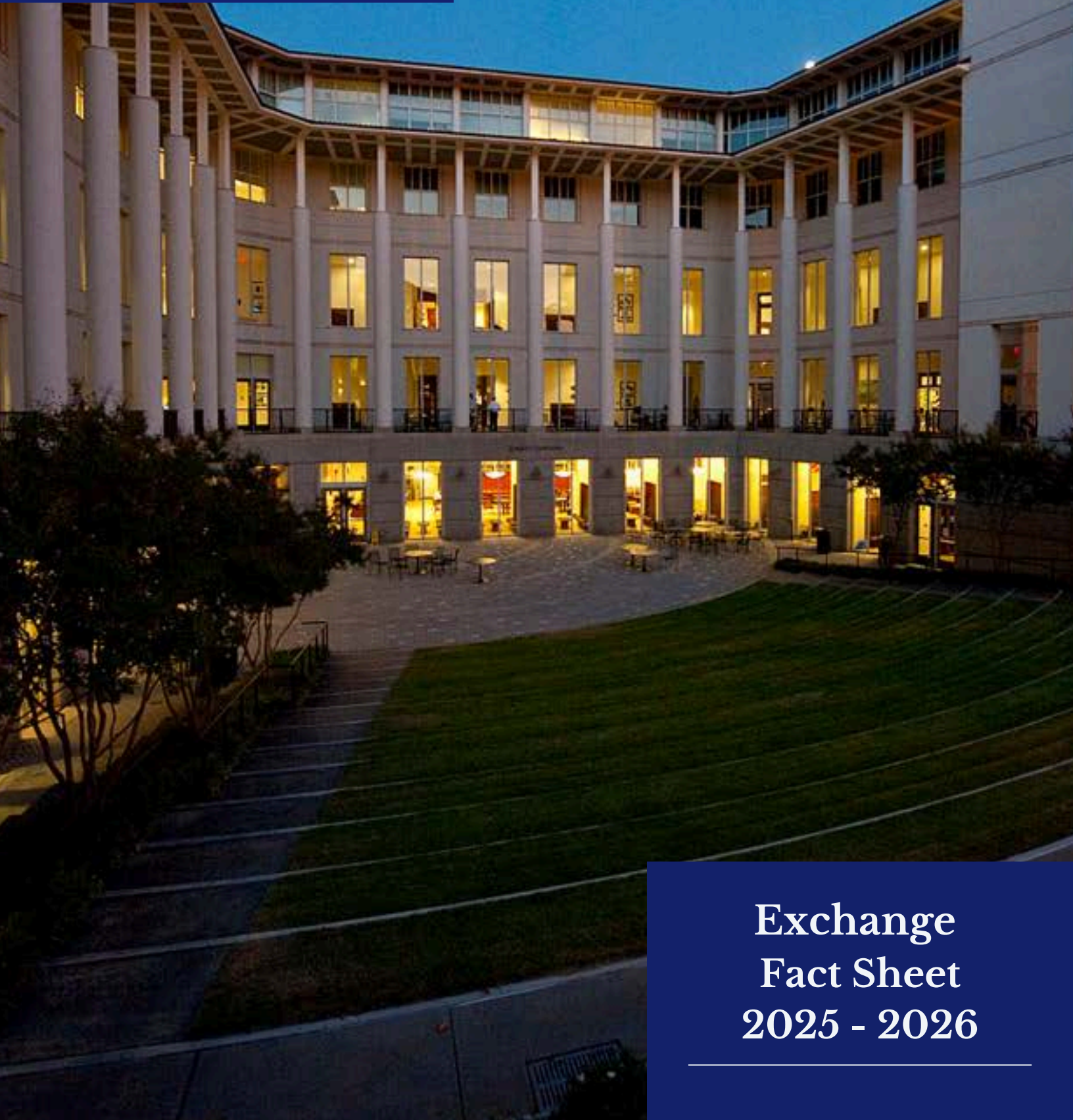




EMORY

GOIZUETA  
BUSINESS  
SCHOOL



Exchange  
Fact Sheet  
2025 - 2026

# Welcome to Emory University

Established in 1836, Emory is a progressive teaching, research and service university, comprised of nine major academic divisions and featuring numerous centers for research and advanced study, as well as a broad base of distinguished affiliates.

Led by President Gregory Fenves, the University has 15000 students and 3400 faculty members who represent all regions of the United States and more than 100 foreign nations.

Goizueta Business School was founded in 1919 and named after the former CEO of the Coca-Cola Company, Roberto C. Goizueta in 1994.

Emory is part of a worldwide network that includes The Carter Center, EmTech Biosciences, and the Centers for Disease Control and Prevention. Emory welcomed its first international student to campus over one hundred years ago.

Emory University's mission is to create, preserve, teach, and apply knowledge in the service of humanity.





EMORY

GOIZUETA  
BUSINESS  
SCHOOL

## Location

Nestled within the tree-lined residential campus of Emory University, Goizueta lies just a few miles from the heart of downtown Atlanta. With a population of more than 4.8 million people and the world's busiest airport at its disposal, Atlanta boasts the third-highest number of Fortune 500 corporate headquarters.

The city attracts three-fourths of the Fortune 1000 with a thriving entrepreneurial and business climate that features names ranging from multinational corporations such as The Home Depot, The Coca-Cola Company and UPS to the vast array of small startup ventures found in our technology corridor. Emory is a non-smoking campus.



## Campus Life

Student life is as dynamic as it is diverse. With a student body of nearly 15,000, the university offers a thriving community where academic excellence meets rich extracurricular opportunities. More than 400 student organizations cater to a wide range of interests, from leadership and service to the arts and athletics, ensuring that every student finds a place to belong.

The campus culture encourages collaboration and innovation, while Emory's location in the vibrant Atlanta area enhances student experiences with access to internships, cultural events, and career networks. The sense of community on campus fosters personal growth and lifelong connections.



# EMORY | GOIZUETA BUSINESS SCHOOL

Emory University's mission is to create, preserve, teach, and apply knowledge in the service of humanity.

## Learning Environment

WEBPAGE

### Grading

- The Goizueta Full-time MBA program has an alternative grading format without a grade point average. Students receive grades of Distinguished (DS), High Performance (HP), Performance Standard (PS), Low Performance (LP) or No Credit (NC). Students are considered passing at all grade levels except for No Credit. There is a limit of two (2) grades of Low Performance in a semester.
- The Goizueta Business School BBA Undergraduate Program uses a standard grading system of A, A-, B+, B, etc.



### Language Instruction

- English. No intensive language courses offered. J-1 students need to have sufficient English fluency perform their academic activities and navigate daily life in the US.

There are 3 options for verifying English language proficiency during the initial request process:

- A recognized English language test (TOEFL, IELTS or Pearson)
- Signed documentation from an academic institution or English language school (download template letter)
- A documented interview by Emory's hosting department either in person or by video conference





## Our classes

### Participation.

Active class participation is required. It may be a part of the course grade.

### Examinations.

Final exams and final projects are scheduled in the last week or two weeks of a semester. The exam schedule is made available during the semester.

### Course Load.

MBA Students take between 4 and 6 academic classes per semester (24 – 36 ECTS). A minimum of 4 academic classes (12 Emory credits) are required for exchange students.

### Class Sizes.

Average is about 45 in MBA and BBA elective classes. Almost all classes have a max of 66.

## Class Information

- Seminar style classes varying Case method and Lecture (by professor and subject matter)
- Team projects popular
- Classes meet between 8:30am and 9:30pm. No regular classes on Fridays, but structured activities may occur.
- Class attendance mandatory.
- **Grades** are available two weeks after the term via the OPUS system. Official transcripts are issued approximately four weeks following the end of the term. **Students must request transcripts to be sent to their home school on OPUS** (student record system) at the end of the term.



## Our websites

[MBA INTERNATIONAL PROGRAMS](#) | [BBA EXCHANGE PROGRAMS](#)

# Student Living

## Approximate Costs

\*Please note that these costs are per semester and based on estimates for this academic year. Students are not required to spend the amounts noted for food, books, other living expenses, and transportation, but they must demonstrate that they have access to these funds specifically for their education.



|                                    |                |
|------------------------------------|----------------|
| Accommodation                      | \$5500-\$8000  |
| Food                               | \$2520         |
| Student Fees                       | \$440          |
| Mandatory Insurance                | \$2500         |
| Class materials                    | \$600          |
| Other Living Expenses              | \$700          |
| <b>Total Estimate per Semester</b> | <b>\$12662</b> |

- This includes the fees student must pay Emory by or at Orientation of \$440 (2024-25).
- **You must provide financial documentation (bank statements and letters) that you have sufficient funds to equal the estimated expenses for the semester.**
- Family members coming on your visa status will require documentation of additional funding.



# Student Accommodation

## On Campus Housing

Limited spaces for on campus housing may be available for undergraduate students only. Spaces available at Clairmont Campus, Eagle Row, and Woodruff residential center. Students must submit a housing application, and housing assignment offers are extended to students on a rolling basis.

### WEBSITE

On-campus housing is limited. Most students should expect to reside in double-occupancy rooms at either Eagle Row or Clairmont Tower. The probability of receiving an on-campus housing assignment on the waitlist and timeline is dynamic

## Off Campus Housing

Short-term, furnished leases are not common, but are available at some apartment complexes. Many exchange students sublet, negotiate rates through Airbnb or use the Off Campus Housing Finder or Emory Housing group on Facebook. The cost for a room for fall 2023 was about \$1300 per person per month. Emory is not able to make off-campus arrangements for you

### WEBSITE



## On Campus Housing Options

### **Eagle Row:**

Eagle Row lodges and houses are traditionally sorority/fraternity facilities. Exchange students seeking a uniquely American collegiate experience should consider. Each facility houses 20 to 40 students in a double-occupancy room configuration.

### **Clairmont Campus:**

Apartment-style housing is on campus west of Clairmont Road, connected to the Clifton Road campus via Emory Shuttle. Each apartment contains a bedroom(s), a common living area, a kitchen, and laundry facilities. 2 to 4 students reside in each apartment.



**Eagle Row**



**Clairmont Campus**



ROBERTO C. GOIZUEETA  
BUSINESS SCHOOL



# Student Services



## Recreation Venues

Emory has two state of the art recreation centers for its students. The Woodruff Physical Education Center is less than 5 minutes from the Goizueta Business School and includes an Olympic-sized pool, a rock climbing wall, weight training facilities, indoor and outdoor running tracks, indoor and outdoor tennis courts, four basketball courts and numerous racquetball, squash and badminton courts.

The Student Activity & Academic Center also offers an outdoor Olympic-sized pool, indoor weight training facilities and numerous outdoor tennis courts. All facilities are free to students with a Student ID.

## Health Insurance

Health insurance is mandatory for all exchange visitors. Emory requires all degree-seeking students to have health insurance. Rates for insurance coverage vary each semester. All immunization costs are covered under the Emory Insurance. Students will be automatically enrolled in the Emory University Student Health Insurance Plan. Exchange students may elect to decline this coverage by completing the Waiver Option form, if they can show proof of sufficient alternative coverage with access to covered healthcare in Atlanta.

[Website.](#)

## Immunizations

Immunizations are mandatory for all exchange visitors. The Emory Student Health Services requires documentation to allow for course registration. Immunizations are available on campus (free with Emory's Student Health Insurance; check your plan for coverage).

[Website.](#)



# Dates & Deadlines

| Nominations & Applications | Fall Semester 2025 | Spring Semester 2026 |
|----------------------------|--------------------|----------------------|
| Nominations Open           | February 7th       | August 1st           |
| Nominations Deadline       | April 4th          | September 19th       |
| Applications Open          | April 7th          | September 22nd       |
| Applications Deadline      | May 2nd            | October 3rd          |
| Official Acceptance        | May 9th            | October 10th         |

| Exchange Calendar                      | Fall Semester 2025 | Spring Semester 2025 |
|--|--------------------|----------------------|
| Health Insurance Waiver Deadline       | June 1st           | December 1st         |
| Housing Portal Opens                   | August 1st         | October 15th         |
| Housing Portal Closes                  | December 1st       | June 1st             |
| Immunization Requirement Form Deadline | August 1st         | December 1st         |
| Course Enrollment Opens                | Late June          | Mid-November         |
| Mandatory Orientation                  | TBD                | TBD                  |
| Classes Start                          | August 27th        | January 13th         |
| Fees Payment Deadline                  | September 1st      | January 21st         |



## Student Business Societies

Goizueta has over 20 student led associations grouped by academic focus or regional interest. Ranging from investment banking, consulting, business analytics, and more. Emory University clubs are available too.

[Website.](#)

## Career Services

Exchange students will have access to the Career Management Center (CMC) International Student Coach. But no full access to the CMC services.

The CMC International Student Coach is an International Student Assistant dedicated to career coaching for international exchange students.

Helping exchange students with:

- Navigating EagleOps and Handshake for internship and job search
- Revising resumes and cover letters
- Demonstrating how to network via LinkedIn, Emory Connect, and other sources
- Pointing to online and campus resources such as the BBA CMC Canvas page and Goizueta Business Library.

These resources are a great source for international students careers.



# Past Students Testimonials



## Suwhan Lim

*Yonsei University, South Korea*

“I had never lived in the States before, so coming here was a great opportunity for me. Atlanta was amazing—I loved the culture, the sports, and the vibe. The city is so diverse and lively, and I tried so many new foods, like Southern barbecue and grits. I even got to go to a few Hawks games, which was incredible! The energy in the arena was unreal, and now I’m a huge NBA fan. Emory’s campus was beautiful, and I met so many great people. This exchange semester was such a meaningful experience, and I’ll always remember my time in Atlanta.”

## Natalia Baranera

*ESADE Business School, Barcelona, Spain*

“Emory was an incredible experience, defined by its welcoming community and lifelong friendships. The university’s top-tier facilities, including the gym and Student Center, enhanced campus life, while living in a sorority allowed me to fully immerse myself in the American college experience. Atlanta’s prime location and the fact that it is the world’s busiest airport made it easy to explore multiple destinations across the United States, making my exchange even more unforgettable.”



## Devna Joshi

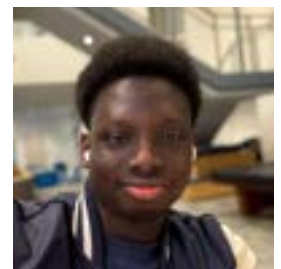
*City University London, United Kingdom*

I had never lived in the States before, so coming here was a great opportunity for me. I loved Atlanta. I loved the culture, the sports, and the vibe. I was able to go to a few Hawks games, which is the NBA team in Atlanta. The city’s energy was contagious, from its lively music scene to its diverse food spots, making every day an adventure. Atlanta’s prime location and busy airport made traveling seamless, allowing me to visit new places and experience different parts of the U.S., making my time here even more unforgettable.

## Mouhamed Asla

*American Business School of Paris, France*

“Emory has been an incredible experience. The campus is absolutely stunning, with beautiful green spaces and excellent facilities that make it a great place to study and relax. One of the highlights for me was attending an Atlanta Hawks NBA game with other exchange students- it was such an exciting and memorable experience that brought us all closer together. Beyond that, the community here is amazing, with so many kind and helpful people always ready to support you. It’s been such a welcoming environment, and I’ve really enjoyed my time here!”





BBA International Exchange Office  
Goizueta Business School  
1300 Clifton Rd NE  
Atlanta,  
+1 404 - 712 - 9648



questions can be answered at  
[@emorybbainternational](https://www.instagram.com/emorybbainternational)

[MBAInternationalPrograms@emory.edu](mailto:MBAInternationalPrograms@emory.edu) (MBA-masters)  
[BBAInternationalPrograms@emory.edu](mailto:BBAInternationalPrograms@emory.edu) (BBA-undergraduate)  
[ISSS@emory.edu](mailto:ISSS@emory.edu); website: [www.emory.edu](http://www.emory.edu) (visa processing, student support)